

Male' Declaration Network Meeting Delhi 11-15 Oct. 2005

Jointly Presented

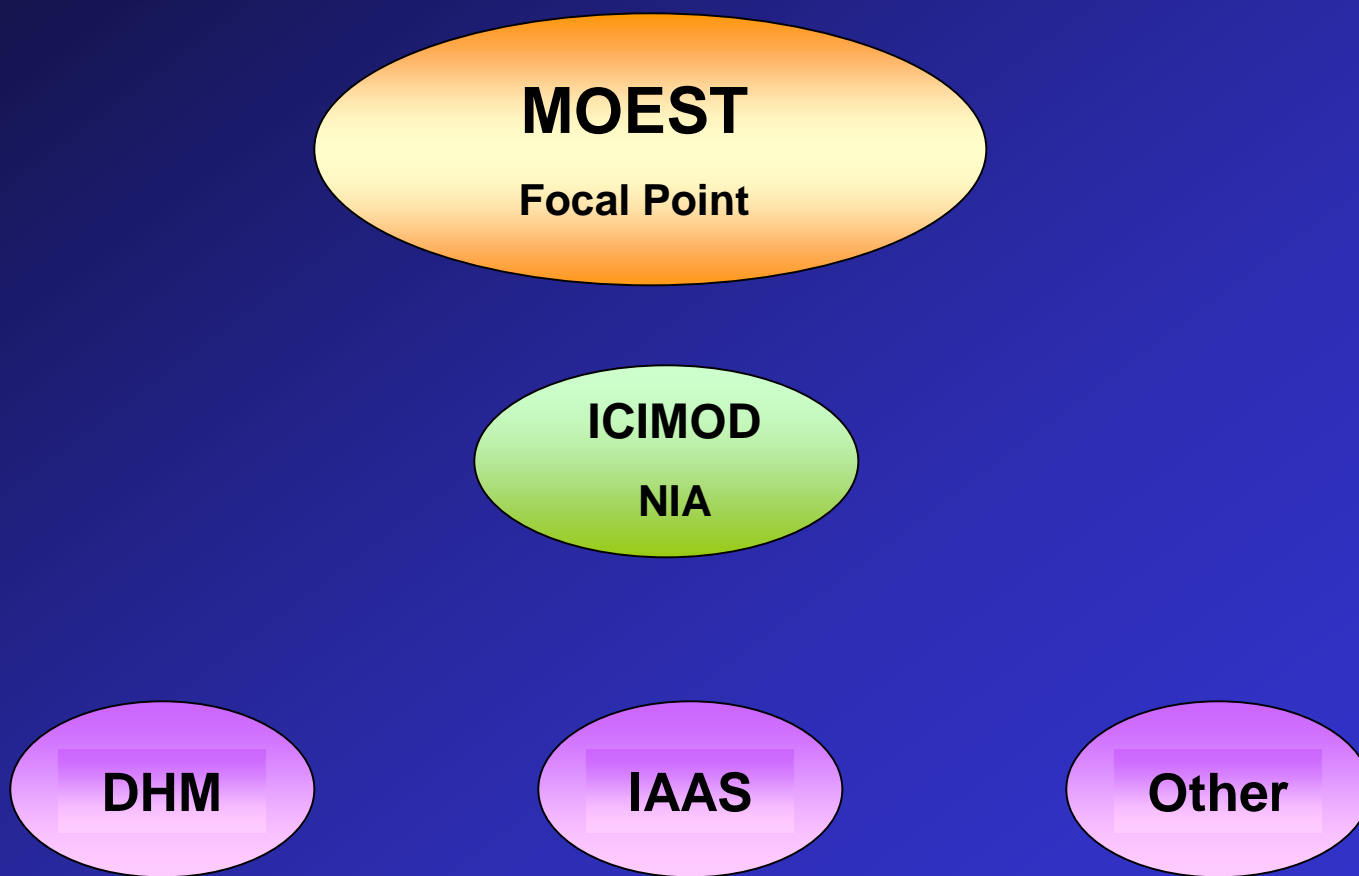
by



HMGN/MOEST



Institutional Arrangement



Phase II - *Capacity Building (2001 – 2004)*

Institutional Networking

Site selection

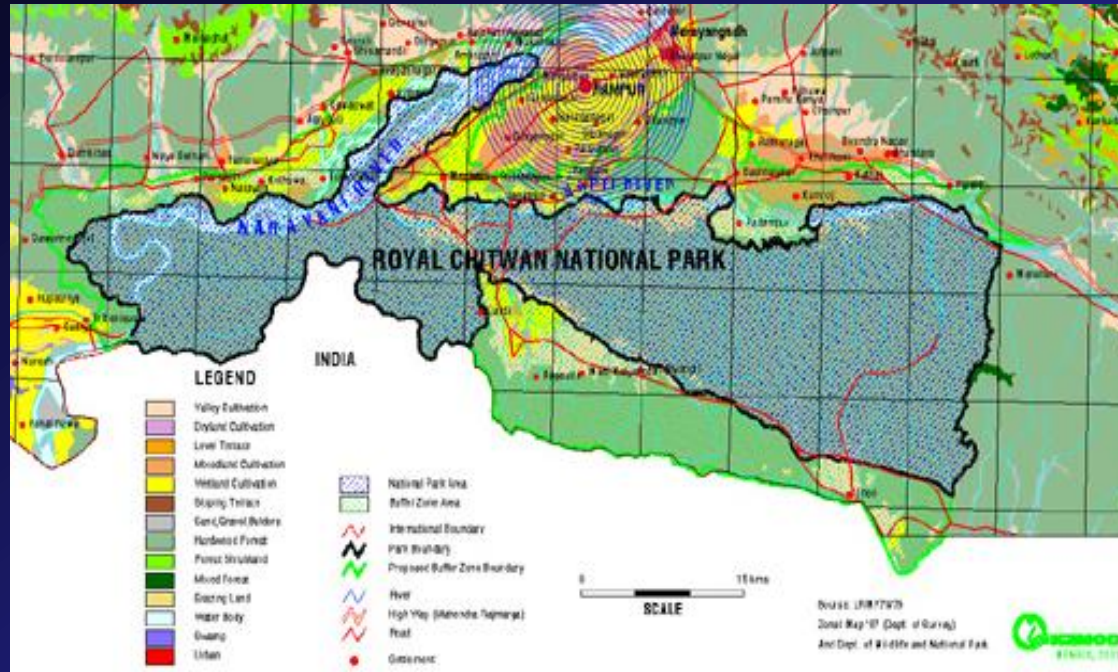
Establishing monitoring station

Strengthening monitoring facilities at local
level

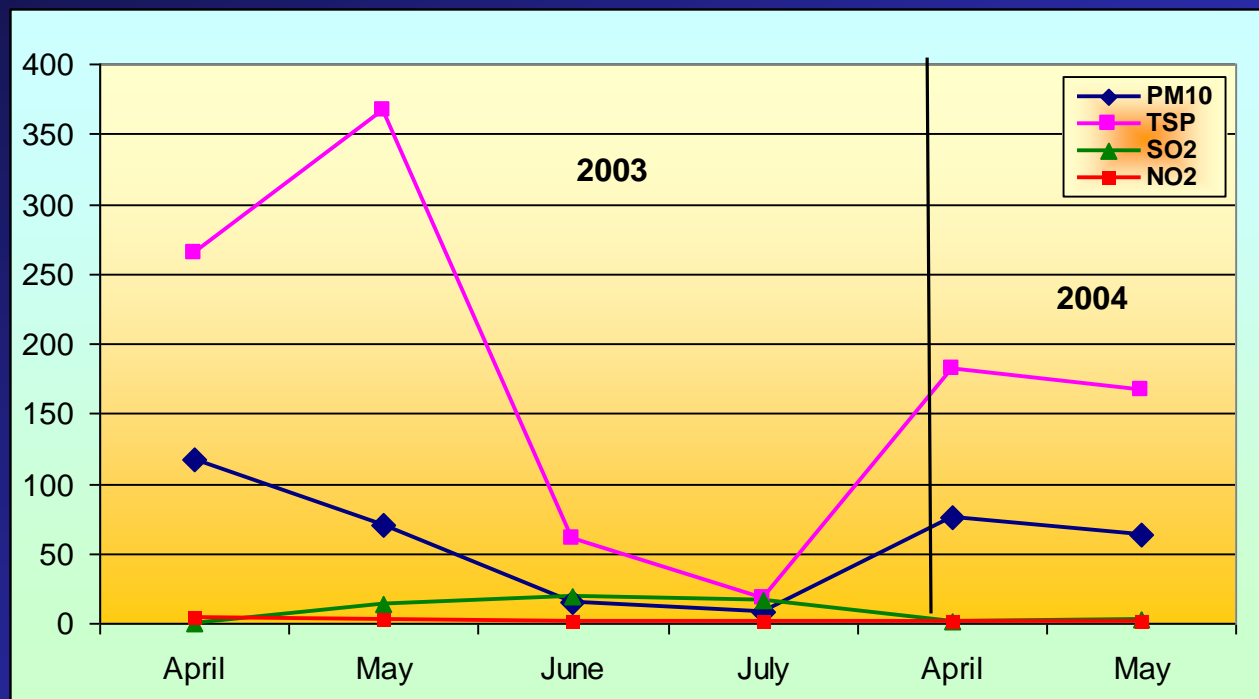
Measurement of the air pollution

Analysis of monitoring results

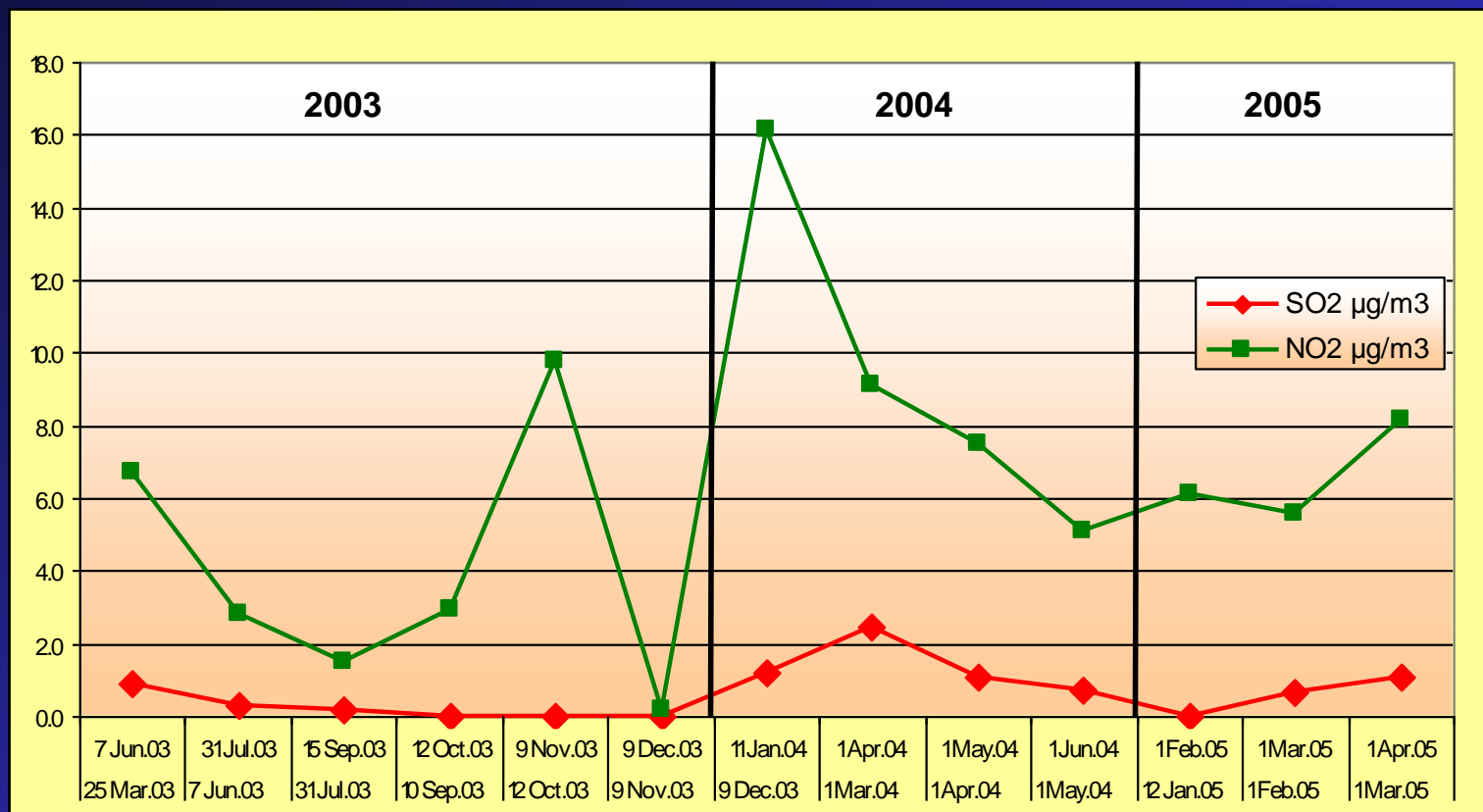
Monitoring Site



Results from HVS



Results from Passive Sampler



Challenges and Difficulties

Strikes

Political instability

Communication with the institute

Irregular power supply

Coordination within related line agencies

Fund\$\$

Advisory Committee

Calibration of Instruments

QC/QA

Proposed New Station

Physiography Nepal

Map I

- Birjung
- Pokhara

Legend

	International Boundary
	District Boundary
Physiography	
	High Mountain
	Mountain
	Hill
	Shiwalik
	Tarai



Source: Dept. of Survey (base map)
Digital Data from ICIMOD



Plan for Next Three Years

Emission Inventory - ICIMOD

Modelling - ICIMOD

Agricultural Impact -IAAS

Health Impact – Teaching Hospital

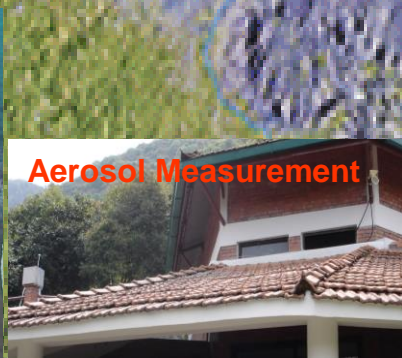
Acidification - IAAS

Corrosion – IOE ??

Haze
Pictures



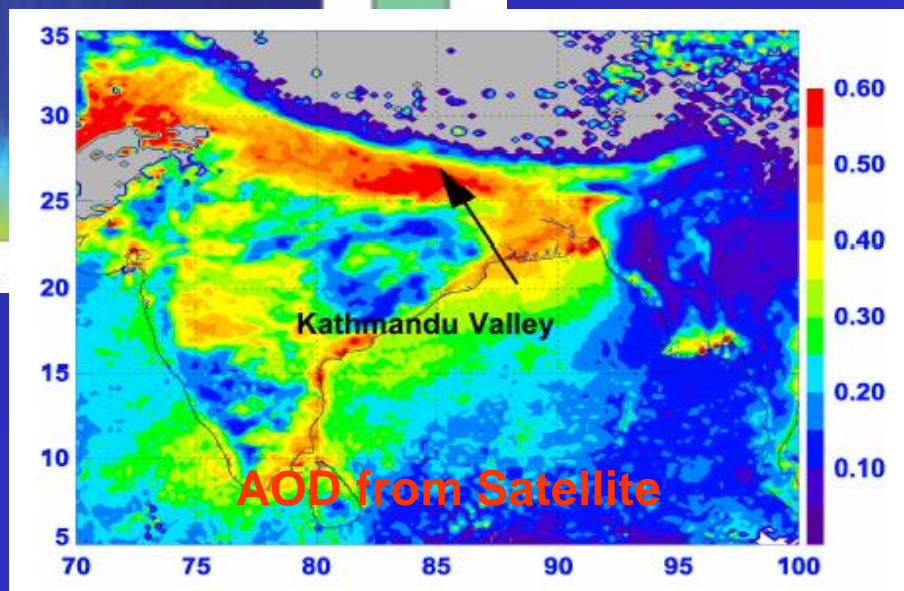
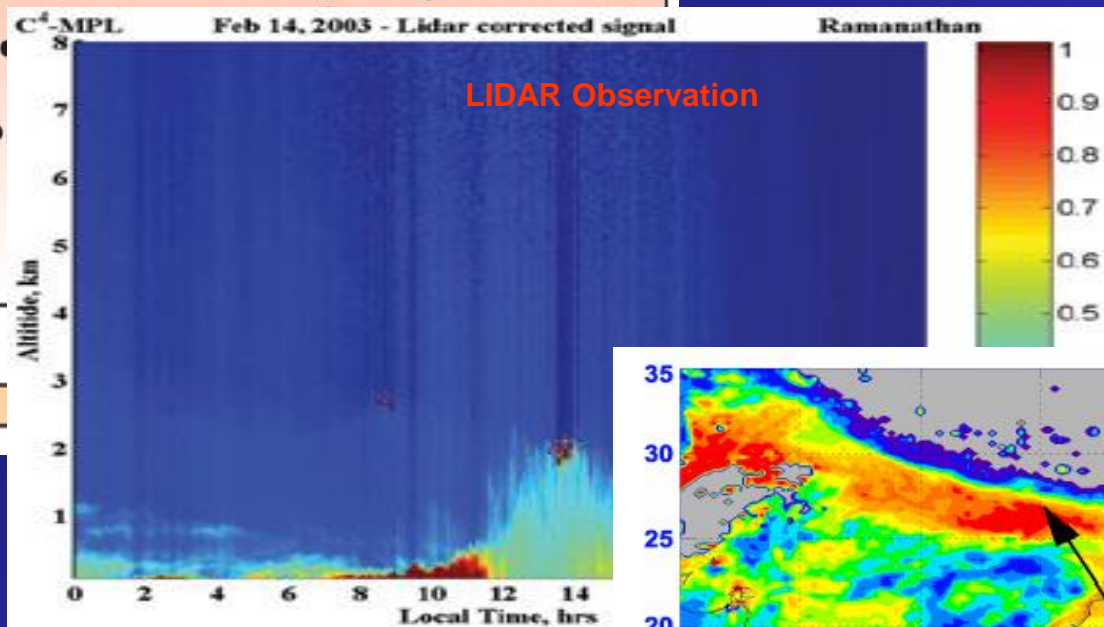
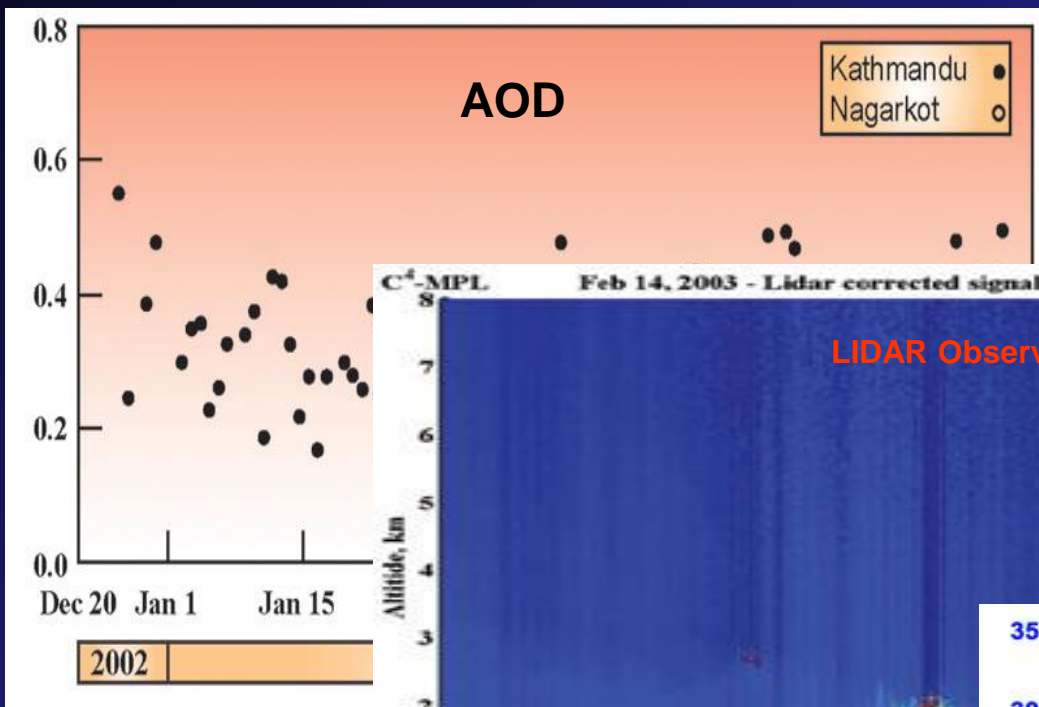
Haze over the lower Himalayas, south of Mt. Everest.



Legend

- ★ - Proposed Vertical Profiling Sites
- - Operational ABC Sites
- - Planned ABC Sites
- ▲ - Under Construction
- - Existing Sites
- ◆ - To Be Determined

Results



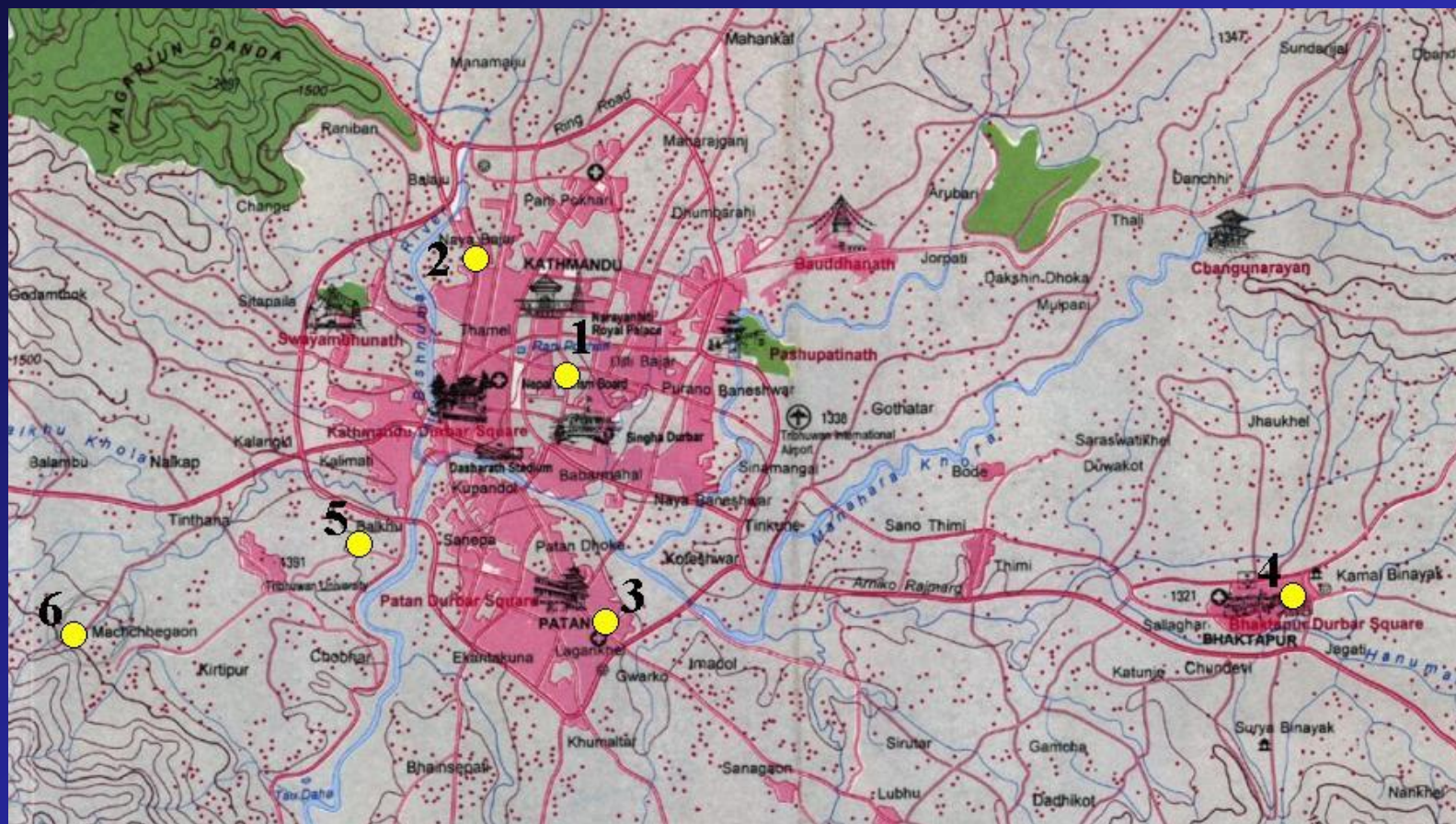
Instrumentation

Radiation

Meteorological

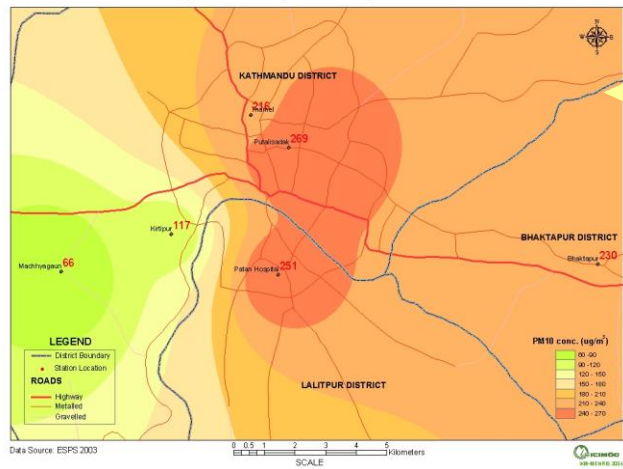


Monitoring Station in Ktm. Valley



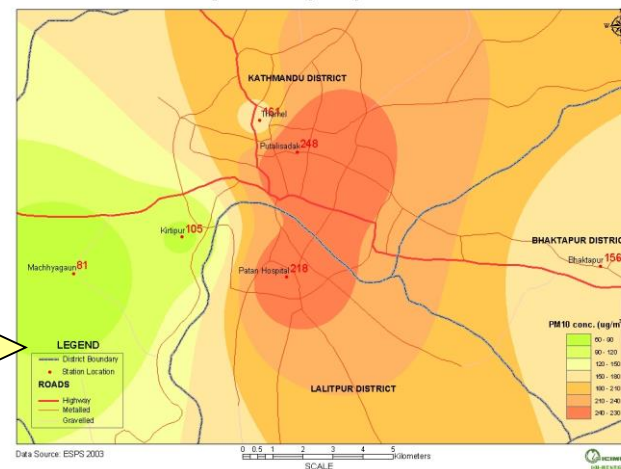
Status of Air Pollution in Kathmandu Valley

Average Air Quality of January to March 2003



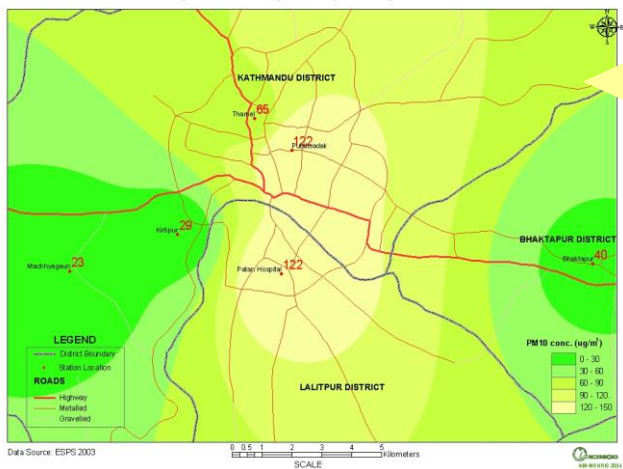
Jan-Mar

Average Air Quality of April to June 2003



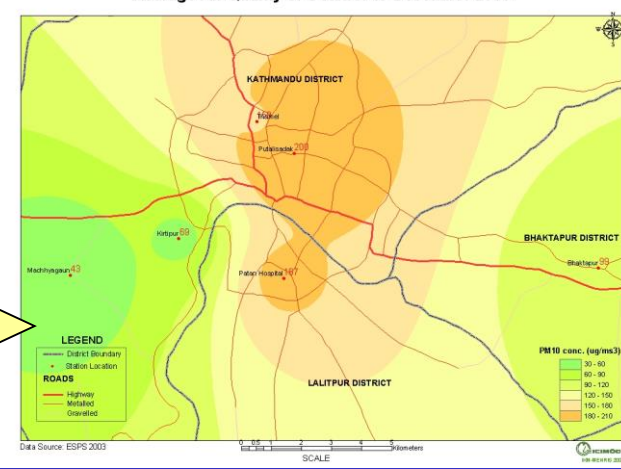
Apr-Jun

Average Air Quality of July to September 2003



Jul-Sep

Average Air Quality of October to December 2003



Oct-Dec



Thank you.....!